

Wireless NVR Kit

Quick Operation Guide

Version: V2.2

1 Statement

Thank you purchasing our products, if you have any questions or needs, please contact us.

This manual applies to wireless network video recorder.

The company based on product feature enhancements and updates the contents of this manual, and will be regularly updated or improved products or processes that are described in this manual. Updates will be added to the new version of this manual without prior notice.

If the description of the manual doesn't match for the material object ,prevail in kind.

2 Attentions

- Please double check when unpacking boxes, confirm the items and lists.
- Please don't make the kit fall to ground or be hit by strong forces.
- Please keep good ventilation environment around this product.
- Avoid installation in severe vibration environments.
- Please avoid environment with much humidity, dust, extreme heat or extreme cold of the power supply carefully.
- Please avoid environment with much humidity, dust, extreme heat or extreme cold of the power supply carefully.
- Please keep the product box to facilitate transfer or removal of the equipment.
- Please make sure to turn off power of all items during installation. Check the voltage properly.
- Please contact the distributor or service center if the kit is damaged or not working

3 Open-package inspection

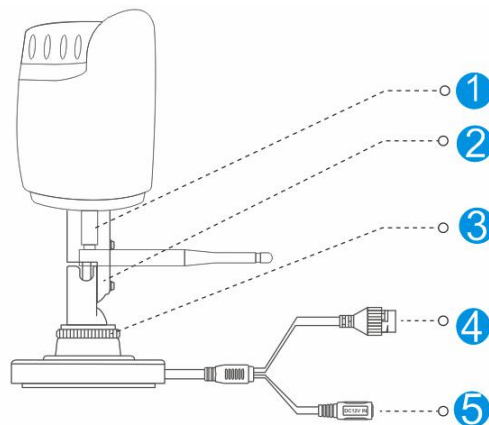
After receive product, please open gift box then check accessories. If any damage or lack, kindly please contact to the distributor.

Packing list

S/N	Item	Quantity
1	NVR Host	1
2	Screw bag(4 screws for HDD)	4
3	USB Mouse	1
4	1 meter network cable(for IPC code match)	1
5	DC 12V@2A Power supply (NVR)	1
6	Product user manuals	1
7	Wireless IP Camera	4/9
8	DC 12V@1A Power supply (for IPC)	4/9
9	Screw bag(4 screws for HDD)	4/9

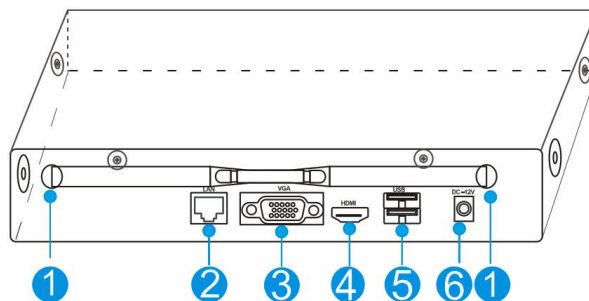
4 Product description

4.1 Wireless Camera



S/N	Item	Description
1	Antenna interface	Install antenna
2	Setscrew	Fixed bracket
3	Knob	Adjust the camera angle
4	Network interface	Connector for LAN
5	Power Supply	12VDC power supply.

4.2 Wireless NVR



S/N	Item	Description
1	Antenna interface	Install antenna
2	Network interface	Connector for LAN
3	VGA interface	DB9 connector for VGA output
4	HDMI interface	HDMI video output connector
5	USB interface	USB ports for additional devices such as USB mouse, U disk
6	Power Supply	12VDC power supply.

5 Installation device

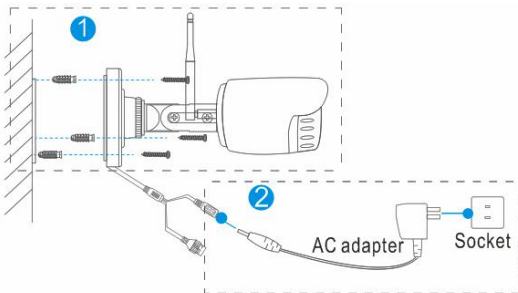
5.1 Install wireless camera

Note: 1. Disconnect the power from the NVR before installing a hard disk drive (HDD). A factory recommended HDD should be used for this installation.

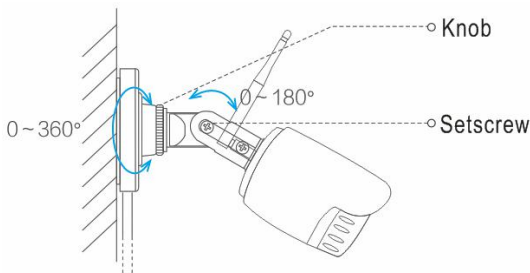
2. The maximum of hard disk capacity supported is 4TB.

Steps:

- (1) Drill mounting holes, push in screws and fasten the screws.
- (2) Connect Power adapter to socket.



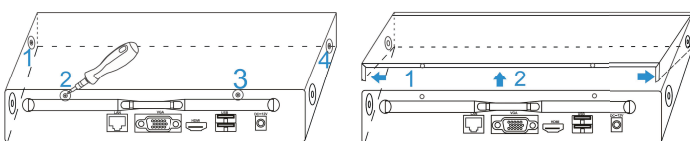
- (3) Loosen the setscrew and knob, adjust the camera angle according to your surveillance need, then fasten the screws.



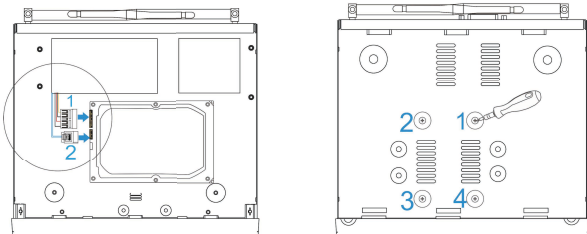
5.2 Install wireless NVR

Steps:

1. Install the hard disk with a cross screwdriver



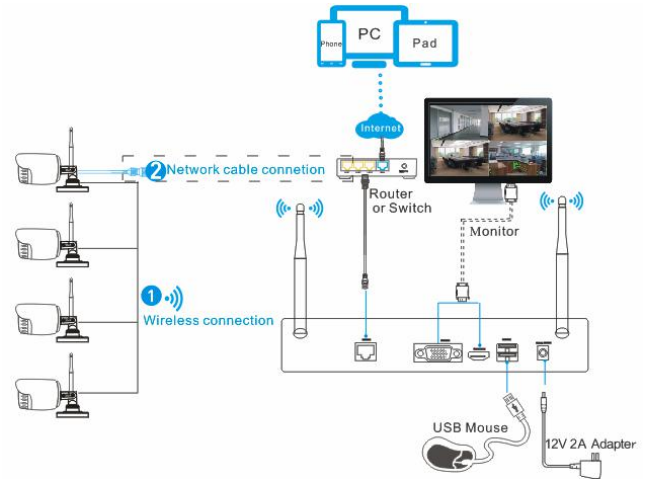
- (1) Unfastening the screws on the rear panel, and side panel.
- (2) Remove the cover from the NVR.



- (3) Connect the data cable and power cable to HDD.
- (4) Fasten the screws on the bottom to fix the HDD.
- (5) Re-install the cover of the NVR and fasten screws.

2. Cable Connection

- (1) Connect mouse to USB interface .
- (2) Connect to monitor by HDMI cable or VGA cable.
- (3) Connect to internet by network cable via router(or switch).
- (4) Connect to 12VDC adapter and turn on power, the Power indicator would turn red.



Notes:

1. Please connect the wireless camera and NVR with network cable, if many obstructions between them, the distance is too far or other factors cause the wireless signal is weak and the image is not normal.
2. . In order to guarantee the video quality, IPC antenna should try to keep in parallel or tangent with NVR antenna. Because the signal of surrounding antenna is much stronger, but much weaker if antenna endpoints back off direction.



Correct method



Fault method

6 Local Operation

Necessary Operation: NVR can only be recording and remote access, after perform necessary operations.

Optional Operation: You can decide whether to do this as you like, such as video playback, backup, device operation, etc.

6.1 Necessary Operation

Step 1: Startup

Check the power supply is plugged into an electrical outlet, and turn on the button. Then the power LED should red, and the video will automatic display on the monitor, after several minutes.



- (4) Select "DHCP", and click "save" button, it'll request IP address from the DHCP server automatically.
- (5) ,the configuration is okay, if the IP address is not 192.168.1.2, After refresh. Otherwise, please set the IP address and gateway information Manually.



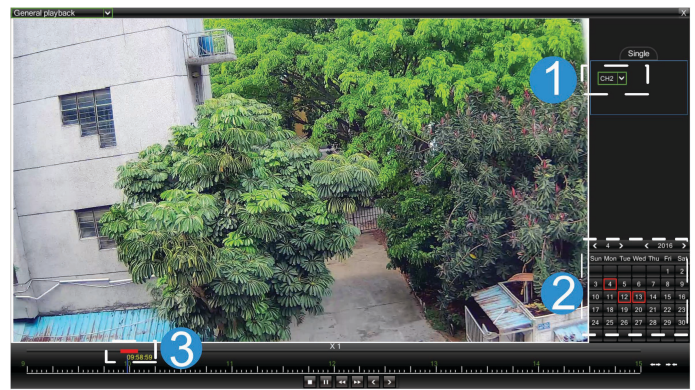
(1) P2P status

(2) Network configuration

6.2 Optional Operation

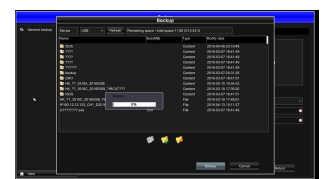
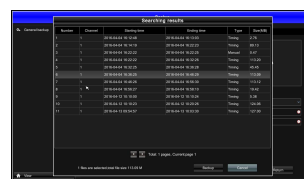
(1) Video playback

Steps: Right click to select playback → login → select single or multi channel playback mode → select channel → select date → double click to start play record.



(2) Video backup

Steps: Insert U disk to USB interface → Right click to select Main menu → login → select backup → select channel → set starting time and ending time → click "Search" button → select the record → select or create new file → click "Backup" button to backup record.



(1) Record list

(2) Backup record

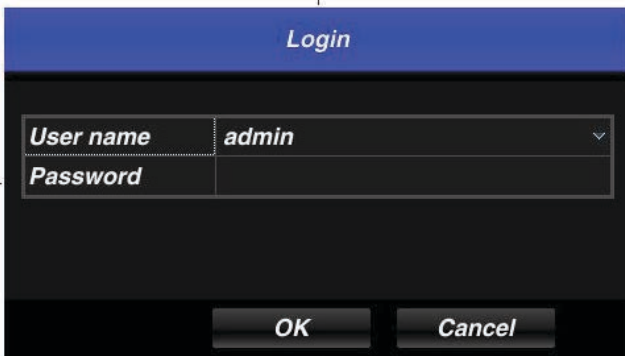
(3) Add camera

Add or replace wireless camera, please follow the steps below.

- a) Connect camera to NVR by network cable, and wait 1.5 minutes for camera start up.
- b) Enter "Main menu → channel management" window, delete offline camera which status is 🚩 in the Added device list.
- c) Click "Search" button, select unadded device (not marked green), then click "Add" button and "save" button.
- d) Return the live view window, right click "WIFI settings", then it'll tip set successful in the bottom right corner.
- e) Unplug the camera cable, enter channel management window again after 30 seconds, repeat search and add device which has not been added steps again.

Step 2: Login

- (1) click right mouse button, log-in menu pops up.
- (2) Enter the correct password, default password is blank.



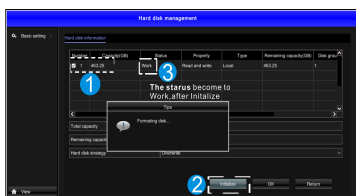
Note: Please modify the user password before using the product to protect your privacy.

Password modification: " Main menu → The system menu → User configuration → Edit button → Edit the u menu → Enter the original password: (blank) → Check password → Set a new password → OK "to change passwords.

Step 3: Format the hard disk

Only NVR can record after format hard disk.

- (1) Right click to login and enter "Main menu → HD manager".
- (2) Select the hard disk, and click "initialization" button .
- (3) The hard disk status would turn on "work". It'll display "REC" on each live view channel, and start record.



(1) HD manager

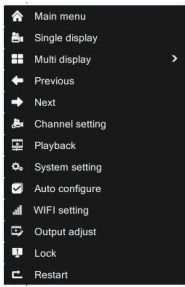
(2) Display "REC" on live view

Step 4: Network configuration

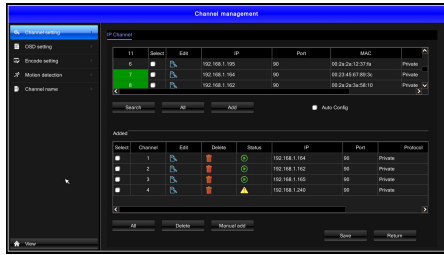
You can remote access NVR via phone or internet after configure network parameter successful.

- (1) Conform network cable is connected to LAN correctly for access the internet.
- (2) If the P2P status is "on", the network configuration is okay. Otherwise please perform the following step.
- (3) Enter into "Main menu → System → Network" menu.

- f) Click "save" button to finish adding. The new camera video would display in the live view window.



(1) Right click menu



(2) Channel management

(4) Channel management function

Channel settings: add or delete camera.

OSD settings: set name or title to camera.

Encode settings: show the camera Coding parameters, such as resolution, bit rate, frame rate, etc., besides, you can change it here.

Motion detection: turn motion detecting on or off, and set the detection area as well as its sensitivity.

Channel name: modify NVR channel name, the default name is CH1~CH4.

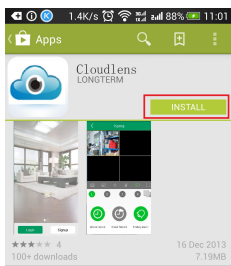
Image Effects: modify camera brightness, hue, Saturation, and Contrast.

7 Cellphone remote monitor

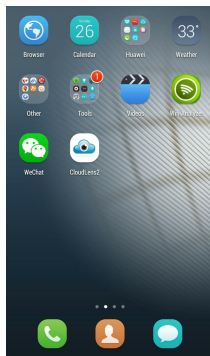
Step 1: Install Cloulens2 software

Method 1: Scanning the Cloulens2 QR code in the user manual or the system maintenance windows of NVR to download, and install it.

Method 2: Search Keyword "Cloulens2 in your "Google Play Store" or APP Store, then tap "INSTALL" to install.



(1) Download and install



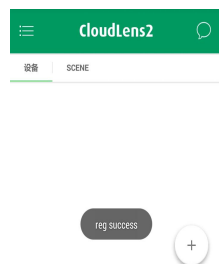
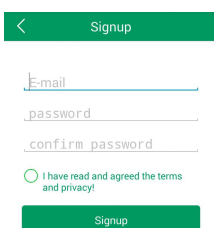
(2) Desk icon



(3) Startup

Step 2: Account registration

- Tap "Signup" button in the login interface view to register;
- Enter E-mail, password, confirm password, select to "terms and privacy", then tap "Signup" button to complete registration.



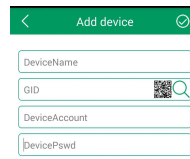
(1) Device list

(3) Signup

(4) Registration success

Step 3: Add device

- Tap "+" button in the main interface view to open the device adding view.



(1) Add device



(2) Scanning QR code

- Input the device name.
- Here provides 3 methods to input GID.

Manual enter: Fill in the info manually. The GID is displayed in the system maintenance menu of NVR.

Two-dimensional code scanning: Scan the two-dimensional code on your NVR (in "system maintenance" menu) to fill in the GID string.

LAN Search: If the device is on the same local network with your phone, Cloulens2 would find them.

- Finally input the DeviceAccount, and DevicePassword.

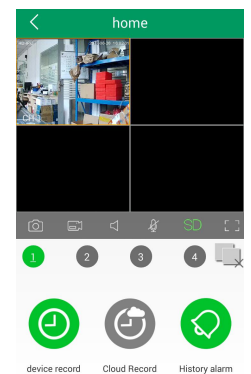
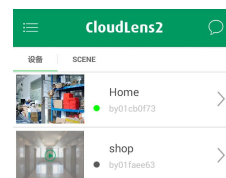
Notes: The default DeviceAccount is admin, password is blank.

When you finish adding devices, they will show in the main interface view under the playing windows area. If the device icon's color is bright-green like ●, it means the device is online. when it is gray, it means the device is offline.

Step 3: Live view

Tap the online device icon in the device list, the channel's video will be connected and display automatically.

Notes: If the local NVR has no video, the cloulens2 have no video.



(2) Live view

Cloudlen2 download QR code

For IOS



For Android



1095 Budapest, Mester utca 34. 1141 Budapest, Fogarasi út 77.
Tel.: *218-5542, 215-9771, 215-7550, Tel.: *220-7940, 220-7814, 220-7959,
216-7017, 216-7018 Fax: 218-5542 220-8881, 364-3428 Fax: 220-7940
Mobil: 30 940-1970, 20 949-2688 Mobil: 30 531-5454, 30 939-9989

E-mail: delton@delton.hu Web: www.delton.hu

www.sanan.hu